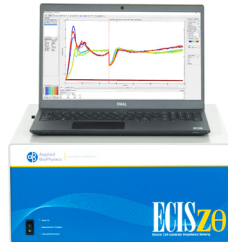
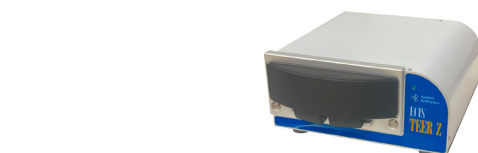


ECIS[®] Instrument Specifications



ECIS [®] Z-Theta Controller	
Electrical Input	100 to 240 VAC, 50 to 60 Hz, 60 W
Output Test Signal	1 - 6 μ A, V dependent on current
Weight	40 lbs/18.1 kg
Impedance Dynamic Range	1-100,000 ohm +/- 1%
Communications	RS-232 Serial to USB, Baud Rate 19,200
Environment	+20 - +40 °C (room temperature)
Dimensions	8 x 17 x 19.5 in/20.3 x 43.2 x 49.5 cm
Status Indicators	LEDs on front panel indicate Power, Measure and Wound
PC Control Unit	
ECIS [®] Software	160 GB
Graphical User Interface (GUI)	2 GB RAM
256 MB Graphics	250 SSD

ECIS [®] 96-Well Array Station	
Electrical input	< 10 W
Electronic interface	ECIS [®] Z-Theta Controller
Communication	26-pin Connector
Environment	~3-22 °C, rel. humidity 95%
Measure rate	~1 point/sec
Dimensions	5 x 6 x 1.75 in/12.7 x 15.21.75 x 4.4 cm
Weight	5 lbs/2.3 kg



ECIS [®] 16-Well Array Station	
Electrical Input	< 10 W
Electronic Interface	ECIS [®] Z-Theta Controller
Communication	26-pin Connector
Environment	~3-22 °C, rel. humidity 95%
Measure Rate	~1 point/sec
Dimensions	7 x 10 x 2.5 in/17.8 x 25.4 x 6.4 cm
Weight	3 lbs/1.4 kg

ECIS [®] TEERZ Station	
Electrical Input	< 10 W
Electronic Interface	ECIS [®] Z-Theta Controller
Communication	26-pin Connector
Environment	~3-22 °C, rel. humidity 95%
Measure Rate	~1 point/3 sec
Dimensions	9.5 x 10 x 4.5 in/24.1 x 25.4 x 11.4 cm
Weight	9 lbs/4.1 kg

