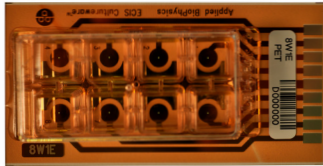


ECIS® 16-Well Station Array Data Sheet

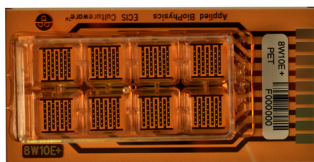
ECIS® 8-Well Arrays



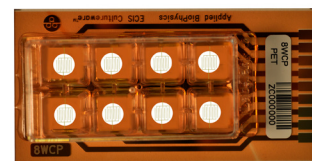
ECIS® 8-Well Array 8W1E	
Footprint	38.1 mm x 75.5 mm
Well Spacing	12 mm center to center
Well Volume	600 µl
Well Substrate Area	0.8 cm ²
Electrical Interface	ECIS® 16-Well Array Station
Materials	Polystyrene chamber, PET or PC bottom substrate, Au electrode
Environment	~3-22° C, rel. humidity 95%
Electrode Area	0.049 mm ²



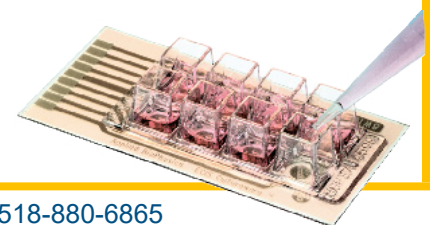
ECIS® 8-Well Array 8W10E	
Footprint	38.1 mm x 75.5 mm
Well Spacing	12 mm center to center
Well Volume	600 µl
Well Substrate Area	0.8 cm ²
Electrical Interface	ECIS® 16-Well Array Station
Materials	Polystyrene chamber, PET or PC bottom substrate, Au electrode
Environment	~3-22° C, rel. humidity 95%
Electrode Area	0.49 mm ²



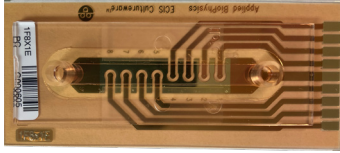
ECIS® 8-Well Array 8W10E+	
Footprint	38.1 mm x 75.5 mm
Well Spacing	12 mm center to center
Well Volume	600 µl
Well Substrate Area	0.8 cm ²
Electrical Interface	ECIS® 16-Well Array Station
Materials	Polystyrene chamber, PET or PC bottom substrate, Au electrode
Environment	~3-22° C, rel. humidity 95%
Electrode Area	1.96 mm ²



ECIS® 8-Well Array 8W20idf	
Footprint	38.1 mm x 75.5 mm
Well Spacing	12 mm center to center
Well Volume	600 µl
Well Substrate Area	0.8 cm ²
Electrical Interface	ECIS® 16-Well Array Station
Materials	Polystyrene chamber, PET or PC bottom substrate, Au electrode
Environment	~3-22° C, rel. humidity 95%
Electrode Area	3.985 mm ²

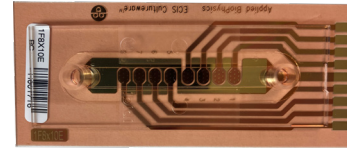


ECIS® Flow Arrays



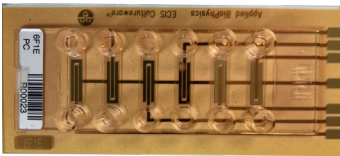
ECIS® Flow Array 1F8X1E

Footprint	38.1 mm x 88.2 mm
Well Volume	90/60 μ l
Channel Height x Width	0.36 x 5 mm
Electrical Interface	ECIS® 16-Well Array Station
Materials	Polystyrene chamber, PC bottom substrate, Au electrode
Environment	~3-22° C, rel. humidity 95%
Electrode Area per Channel	0.049 mm ²



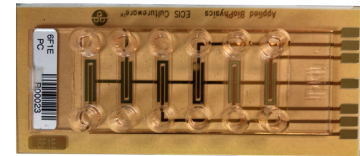
ECIS® Flow Array 1F8X10E

Footprint	38.1 mm x 88.2 mm
Well Volume	90/60 μ l
Channel Height x Width	0.36 x 5 mm
Electrical Interface	ECIS® 16-Well Array Station
Materials	Polystyrene chamber, PC bottom substrate, Au electrode
Environment	~3-22° C, rel. humidity 95%
Electrode Area per Channel	0.49 mm ²



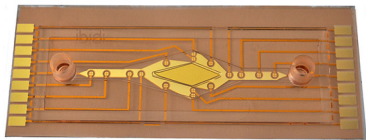
ECIS® Flow Array 6F1E

Footprint	38.1 mm x 88.2 mm
Well Volume	45/60 μ l
Channel Height x Width (6 Channels)	0.66 x 5 mm
Electrical Interface	ECIS® 16-Well Array Station
Materials	Polystyrene chamber, PC bottom substrate, Au electrode
Environment	~3-22° C, rel. humidity 95%
Electrode Area per Channel	0.049 mm ²



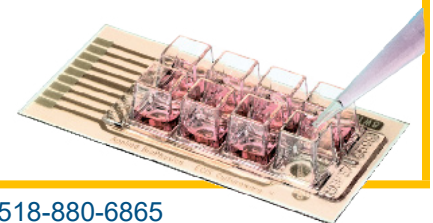
ECIS® Flow Array 6F10E

Footprint	38.1 mm x 88.2 mm
Well Volume	45/60 μ l
Channel Height x Width (6 Channels)	0.66 x 5 mm
Electrical Interface	ECIS® 16-Well Array Station
Materials	Polystyrene chamber, PC bottom substrate, Au electrode
Environment	~3-22° C, rel. humidity 95%
Electrode Area per Channel	0.49 mm ²

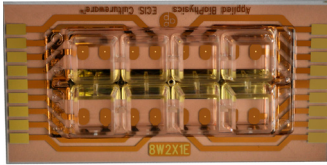


ECIS® Flow Array 1F2Y8X10E

Footprint	38.1 mm x 90.5 mm
Well Volume	165/60 μ l
Channel Height x Width (6 Channels)	0.66 x 5 mm
Electrical Interface	ECIS® 16-Well Array Station
Materials	Polystyrene chamber, PC bottom substrate, Au electrode
Environment	~3-22° C, rel. humidity 95%
Electrode Area per Channel	0.49 mm ²



ECIS® Specialty Arrays



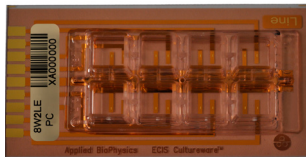
ECIS® 8-Well Array 8W2X1E

Footprint	38.1 mm x 75.5 mm
Well Spacing	12 mm center to center
Well Volume	600 μ l
Well Bottom Diameter	0.8 cm ²
Electrical Interface	ECIS® 16-Well Array Station
Materials	Polystyrene chamber, PET or PC bottom substrate, Au electrode
Environment	~3-22° C, rel. humidity 95%
Electrode Area	2 x 0.049 mm ²



ECIS® 8-Well Array 8W1CXE

Footprint	38.1 mm x 75.5 mm
Well Spacing	12 mm center to center
Well Volume	600 μ l
Well Bottom Diameter	0.8 cm ²
Electrical Interface	ECIS® 16-Well Array Station
Materials	Polystyrene chamber, PET or PC bottom substrate, Au electrode
Environment	~3-22° C, rel. humidity 95%
Electrode Area	0.049 mm ²



ECIS® 8-Well Array 8W2LE

Footprint	38.1 mm x 75.5 mm
Well Spacing	12 mm center to center
Well Volume	600 μ l
Well Substrate Area	0.8 cm ²
Electrical Interface	ECIS® 16-Well Array Station
Materials	Polystyrene chamber, PET or PC bottom substrate, Au electrode
Environment	~3-22° C, rel. humidity 95%
Electrode Area	0.20 mm ²



ECIS® 8-Well Array 2W4x10E

Footprint	38.1 mm x 75.5 mm
Well Spacing	28 mm center to center
Well Volume	3,600 μ l
Well Substrate Area	4.2 cm ²
Electrical Interface	ECIS® 16-Well Array Station
Materials	Glass Chambers, PC bottom substrate, Au electrode
Environment	~3-22° C, rel. humidity 95%
Electrode Area	4 x 0.49 mm ²

